

inserts:		page
<b>CK</b> .....	3 poles + ⊕	33
<b>CK</b> .....	4 poles + ⊕	33
<b>CD</b> .....	7 poles + ⊕	35
<b>CD</b> .....	8 poles	36
<b>CQ</b> .....	5 poles + ⊕	64

overall dimensions:  
21 x 21 mm

bulkhead housings

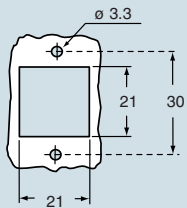


angled bulkhead housings

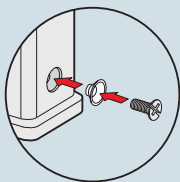


description	part No.	part No. (entry - Pg 11)	part No. (entry - M 20)
with lever <sup>1)</sup>	<b>CK 03 I</b> (white)		
with lever <sup>1)</sup>	<b>CK 03 IN</b> (black)		
without cable gland outlet, with lever <sup>1)</sup>		<b>CK 03 IA</b> (white)	
without cable gland outlet, with lever <sup>1)</sup>		<b>CK 03 IAN</b> (black)	
with threaded entry and lever <sup>1)</sup>		<b>CK 03 IAPS</b> (white)	<b>MK IAP20</b> (white)
with threaded entry and lever <sup>1)</sup>		<b>CK 03 IAPNS</b> (black)	<b>MK IAPN20</b> (black)
kit gaskets and screws for IP65 <sup>2)</sup>	<b>CKR 65</b>	<b>CKR 65</b>	

panel cut-out for enclosures, in mm

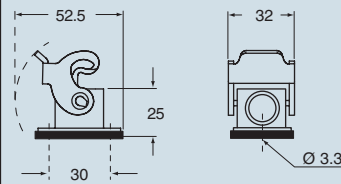


- enclosures with IP44 degree of protection, obtained by the elimination of the flexible washer normal supplied with the insert
- For IP65 degree of protection, a kit CKR 65 is available that includes a gasket to be placed under the insert fastening screw (see example illustrated below) instead of the flexible washer normal supplied with the insert



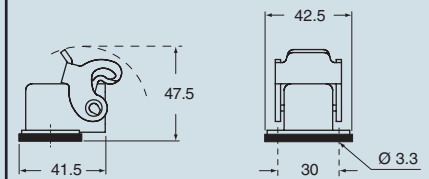
dimensions in mm

CK I(N)

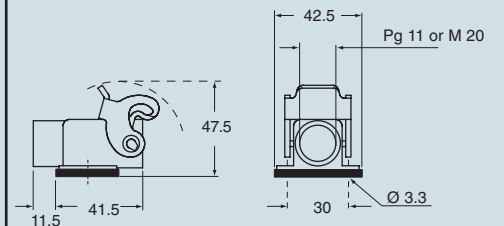


dimensions in mm

CK IA(N)



CK IAP(N)S and MK IAP(N)



dimensions indicated are not binding and may be changed without notice

size 21.21



inserts:		page
CK .....	3 poles + ⊕	33
CK .....	4 poles + ⊕	33
CD .....	7 poles + ⊕	35
CD .....	8 poles	36
CQ .....	5 poles + ⊕	64

overall dimensions:  
21 x 21 mm

hoods

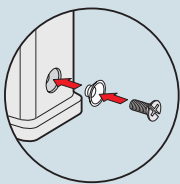


covers



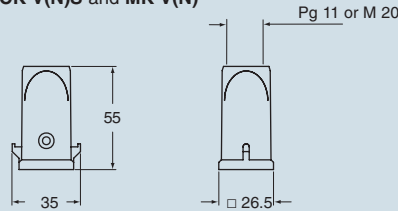
description	part No. (entry - Pg 11)	part No. (entry - M 20)	part No.
with pegs, top entry <sup>1)</sup>	<b>CK 03 VS</b> (white)	<b>MK V20</b> (white)	
with pegs, top entry <sup>1)</sup>	<b>CK 03 VNS</b> (black)	<b>MK VN20</b> (black)	
with pegs, side entry <sup>1)</sup>	<b>CK 03 VAS</b> (white)	<b>MK VA20</b> (white)	
with pegs, side entry <sup>1)</sup>	<b>CK 03 VANS</b> (black)	<b>MK VAN20</b> (black)	
with lever, top entry <sup>1)</sup>	<b>CK 03 VGS</b> (white)	<b>MK VG20</b> (white)	
with lever, top entry <sup>1)</sup>	<b>CK 03 VGNS</b> (black)	<b>MK VGN20</b> (black)	
with pegs and gasket, for female inserts			<b>CK 03 C</b> (white)
with pegs and gasket, for female inserts			<b>CK 03 CN</b> (black)
with pegs, for male inserts			<b>CK 03 CA</b> (white)
with pegs, for male inserts			<b>CK 03 CAN</b> (black)
with lever and gasket, for female inserts			<b>CK 03 CX</b> (white)
with lever and gasket, for female inserts			<b>CK 03 CXN</b> (black)
with lever, for male inserts			<b>CK 03 CXA</b> (white)
with lever, for male inserts			<b>CK 03 CXAN</b> (black)
kit gaskets and screws for IP65 <sup>2)</sup>	<b>CKR 65</b>		

- 1) enclosures with IP44 degree of protection, obtained by the elimination of the flexible washer normal supplied with the insert
- 2) For IP65 degree of protection, a kit CKR 65 is available that includes a gasket to be placed under the insert fastening screw (see example illustrated below) instead of the flexible washer normal supplied with the insert

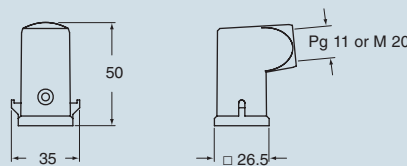


dimensions in mm

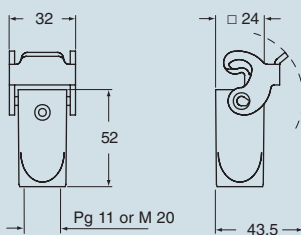
CK V(N)S and MK V(N)



CK VA(N)S and MK VA(N)

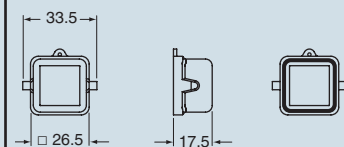


CK VG(N)S and MK VG(N)

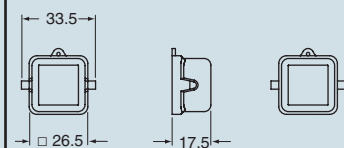


dimensions in mm

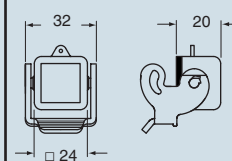
CK C(N)



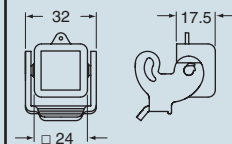
CK CA(N)



CK CX(N)



CK CXA(N)



dimensions indicated are not binding and may be changed without notice

size 21.21



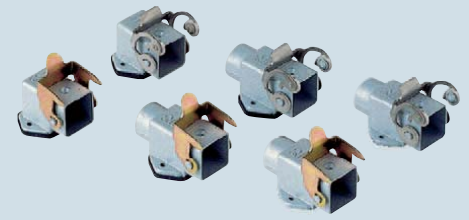
inserts:		page
CK .....	3 poles + ⊕	33
CK .....	4 poles + ⊕	33
CD .....	8 poles	36
CQ .....	5 poles + ⊕	64

overall dimensions:  
21 x 21 mm

bulkhead housings

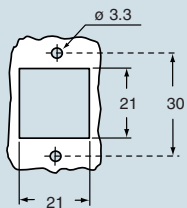


angled bulkhead housings

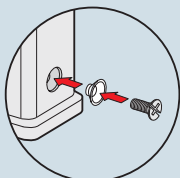


description	part No.	part No. (entry - Pg 11)	part No. (entry - M 20)
with lever in galvanised steel <sup>1)</sup> with stainless steel lever <sup>1)</sup>	<b>CKA 03 I</b> <b>CKAX 03 I</b>		
without cable gland outlet, lever in galvanised steel <sup>1)</sup> without cable gland outlet, stainless steel lever <sup>1)</sup>		<b>CKA 03 IA</b> <b>CKAX 03 IA</b>	
with threaded entry, lever in galvanised steel <sup>1)</sup> with threaded entry, stainless steel lever <sup>1)</sup> with threaded entry, lever in galvanised steel <sup>1)</sup> , bottom closed with threaded entry, stainless steel lever <sup>1)</sup> , bottom closed		<b>CKA 03 IAPS</b> <b>CKAX 03 IAPS</b> <b>CKA 03 APS</b> <b>CKAX 03 APS</b>	<b>MKA IAP20</b> <b>MKAX IAP20</b> <b>MKA AP20</b> <b>MKAX AP20</b>
kit gaskets and screws for IP65 <sup>2)</sup>	<b>CKR 65</b>	<b>CKR 65</b>	

panel cut-out for enclosures, in mm



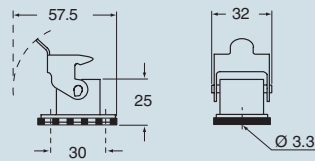
- 1) enclosures with IP44 degree of protection.
- 2) For IP65 degree of protection, a kit CKR 65 is available that includes a gasket to be placed under the insert fastening screw (see example illustrated below) instead of the flexible washer normal supplied with the insert



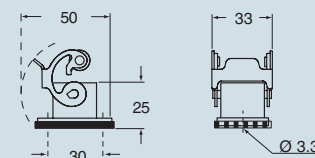
dimensions indicated are not binding and may be changed without notice

dimensions in mm

CKA I

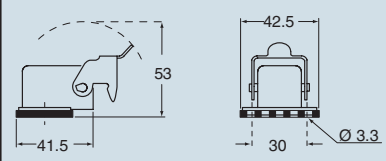


CKAX I

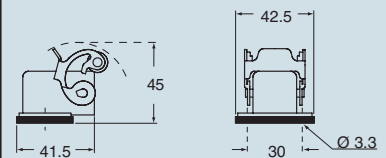


dimensions in mm

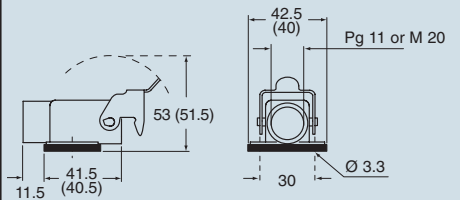
CKA IA



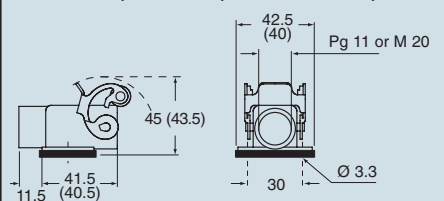
CKAX IA



CKA IAPS (CKA APS) and MKA IAP (MKA AP)



CKAX IAPS (CKAX APS) and MKAX IAP (MKAX AP)



size 21.21



inserts:		page
CK .....	3 poles + ⊕	33
CK .....	4 poles + ⊕	33
CD .....	8 poles	36
CQ .....	5 poles + ⊕	64

overall dimensions:  
21 x 21 mm

hoods

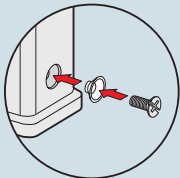


covers



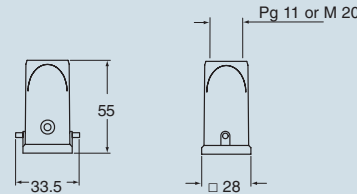
description	part No. (entry - Pg 11)	part No. (entry - M 20)	part No.
with pegs, top entry <sup>1)</sup> with pegs, side entry <sup>1)</sup>	<b>CKA 03 VS</b> <b>CKA 03 VAS</b>	<b>MKA V20</b> <b>MKA VA20</b>	
with lever in galvanised steel, top entry <sup>1)</sup> with stainless steel lever, top entry <sup>1)</sup>	<b>CKA 03 VGS</b> <b>CKAX 03 VGS</b>	<b>MKA VG20</b> <b>MKAX VG20</b>	
with pegs and gasket, for female inserts with pegs, for male inserts			<b>CKA 03 C <sup>2)</sup></b> <b>CKA 03 CA <sup>2)</sup></b>
with stainless steel lever and gasket, for female inserts with stainless steel lever, for male inserts			<b>CKAX 03 CX</b> <b>CKAX 03 CXA</b>
kit gaskets and screws for IP65 <sup>3)</sup>	<b>CKR 65</b>		

- 1) enclosures with IP44 degree of protection.
- 2) better to use with CKAX enclosures (stainless steel lever).
- 3) For IP65 degree of protection, a kit CKR 65 is available that includes a gasket to be placed under the insert fastening screw (see example illustrated below) instead of the flexible washer normal supplied with the insert

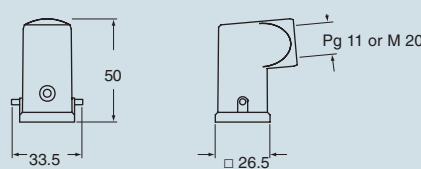


dimensions in mm

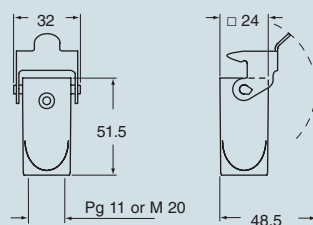
**CKA VS and MKA V**



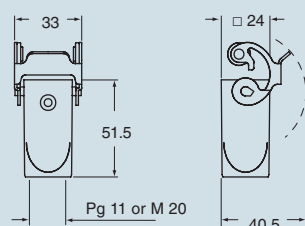
**CKA VAS and MKA VA**



**CKA VGS and MKA VG**

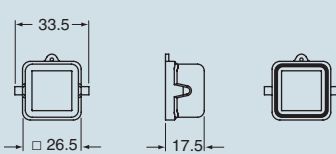


**CKAX VGS and MKAX VG**

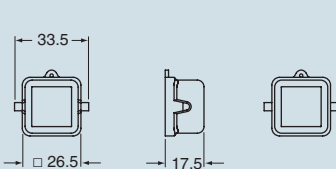


dimensions in mm

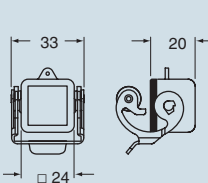
**CKA C**



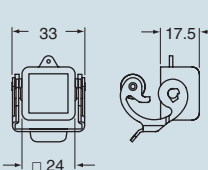
**CKA CA**



**CKAX CX**



**CKAX CXA**



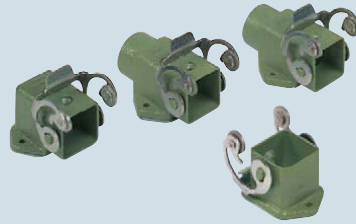
dimensions indicated are not binding and may be changed without notice

size 21.21

inserts:		page
<b>CK</b> .....	3 poles + ⊕	33
<b>CK</b> .....	4 poles + ⊕	33
<b>CD</b> .....	8 poles	36
<b>CQ</b> .....	5 poles + ⊕	64

overall dimensions:  
21 x 21 mm

**bulkhead housings  
straight and angled**

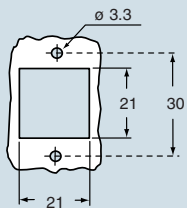


**hoods**

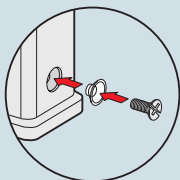


description	part No. (entry - Pg 11)	part No. (entry - M 20)	part No. (entry - Pg 11)	part No. (entry - M 20)
with stainless steel lever <sup>1)</sup>	<b>CKAXW 03 I</b>			
without cable gland outlet, stainless steel lever <sup>1)</sup>	<b>CKAXW 03 IA</b>			
with threaded entry, stainless steel lever <sup>1)</sup>	<b>CKAXW 03 IAP</b>	<b>MKAXW IAP20</b>		
with threaded entry, stainless steel lever <sup>1)</sup> , bottom closed	<b>CKAXW 03 AP</b>	<b>MKAXW AP20</b>		
with pegs, top entry <sup>1)</sup>			<b>CKAW 03 V</b>	<b>MKAW V20</b>
with pegs, side entry <sup>1)</sup>			<b>CKAW 03 VA</b>	<b>MKAW VA20</b>
with stainless steel lever, top entry <sup>1)</sup>			<b>CKAXW 03 VG</b>	<b>MKAXW VG20</b>
kit gaskets and screws for IP65 <sup>2)</sup>	<b>CKR 65</b>		<b>CKR 65</b>	

panel cut-out for enclosures, in mm



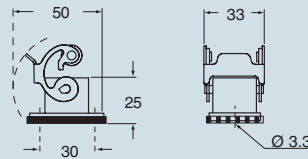
- 1) enclosures with IP44 degree of protection.
- 2) For IP65 degree of protection, a kit CKR 65 is available that includes a gasket to be placed under the insert fastening screw (see example illustrated below) instead of the flexible washer normal supplied with the insert



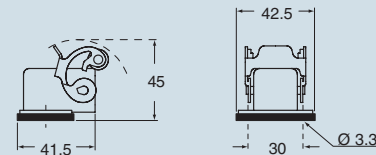
dimensions indicated are not binding  
and may be changed without notice

dimensions in mm

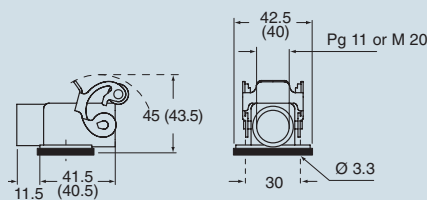
**CKAXW I**



**CKAXW IA**

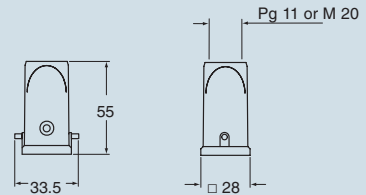


**CKAXW IAP (CKAXW AP) and  
MKAXW IAP (MKAXW AP)**

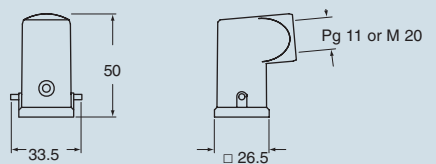


dimensions in mm

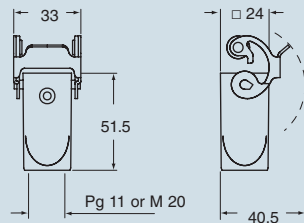
**CKAW V and MKAW V**



**CKAW VA and MKAW VA**



**CKAXW VG and MKAXW VG**



size 21.21



inserts:		page
CK .....	3 poles + ⊕	33
CK .....	4 poles + ⊕	33
CD .....	8 poles	36
CQ .....	5 poles + ⊕	64

overall dimensions:  
21 x 21 mm

**bulkhead housings  
straight and angled**

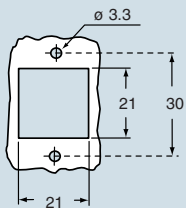


**hoods**



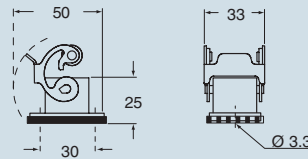
description	part No. (entry - Pg 11)	part No. (entry - M 20)	part No. (entry - Pg 11)	part No. (entry - M 20)
with stainless steel lever <sup>1)</sup>	<b>CKAXS 03 I</b>			
without cable gland outlet, stainless steel lever <sup>1)</sup>	<b>CKAXS 03 IA</b>			
with threaded entry, stainless steel lever <sup>1)</sup>	<b>CKAXS 03 IAP</b>	<b>MKAXS IAP20</b>		
with threaded entry, stainless steel lever <sup>1)</sup> , bottom closed	<b>CKAXS 03 AP</b>	<b>MKAXS AP20</b>		
with pegs, top entry <sup>1)</sup>			<b>CKAS 03 V</b>	<b>MKAS V20</b>
with pegs, side entry <sup>1)</sup>			<b>CKAS 03 VA</b>	<b>MKAS VA20</b>
with stainless steel lever, top entry <sup>1)</sup>			<b>CKAXS 03 VG</b>	<b>MKAXS VG20</b>
kit gaskets and screws for IP65 <sup>2)</sup>	<b>CKR 65</b>		<b>CKR 65</b>	

panel cut-out for enclosures, in mm

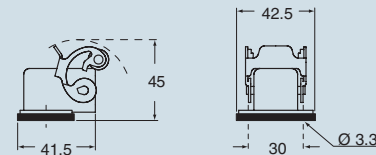


dimensions in mm

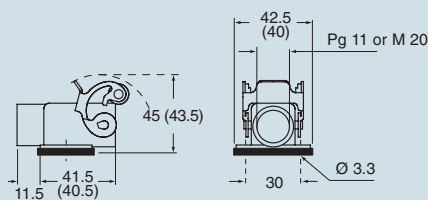
**CKAXS I**



**CKAXS IA**

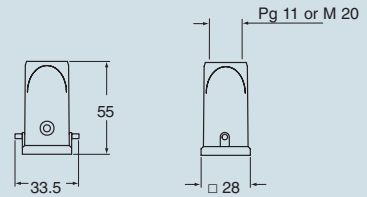


**CKAXS IAP (CKAXS AP) and  
MKAXS IAP (MKAXS AP)**

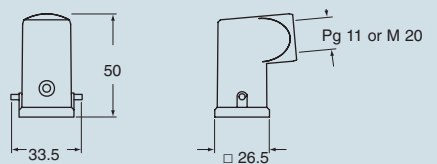


dimensions in mm

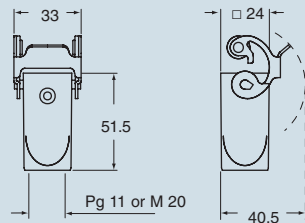
**CKAS V and MKAS V**



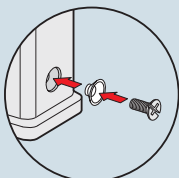
**CKAS VA and MKAS VA**



**CKAXS VG and MKAXS VG**



- 1) enclosures with IP44 degree of protection.
- 2) For IP65 degree of protection, a kit CKR 65 is available that includes a gasket to be placed under the insert fastening screw (see example illustrated below) instead of the flexible washer normal supplied with the insert



dimensions indicated are not binding and may be changed without notice

size 21.21



inserts:		page
<b>CD</b> .....	15 poles + ⊕	37
<b>CDA</b> .....	10 poles + ⊕	58
<b>CDC</b> .....	10 poles + ⊕	59
<b>MIXO</b> .....	1 module	124÷137

**bulkhead mounting housings with single lever**

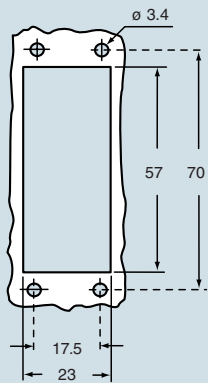


**surface mounting housings with single lever**



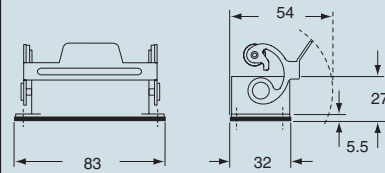
description	part No.		part No.		part No.	
			entry Pg		entry M	
with basic lever	<b>CZI 15 L</b>					
with basic lever and cover	<b>CZI 15 LS</b>					
with basic lever			<b>CZP 15 L</b>	16		
with basic lever			<b>CZP 15 L2</b>	16 x 2	<b>MZP 15 L225</b>	25
with basic lever			<b>CZP 15 L21</b>	21	<b>MZP 15 L25</b>	25
with basic lever and cover			<b>CZP 15 LS221</b>	21 x 2	<b>MZP 15 LS225</b>	25 x 2

panel cut-out for bulkhead mounting housings in mm

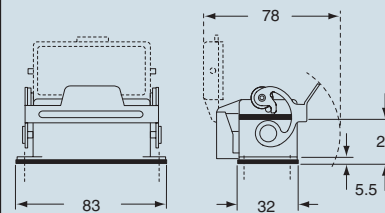


dimensions in mm

**CZI L**

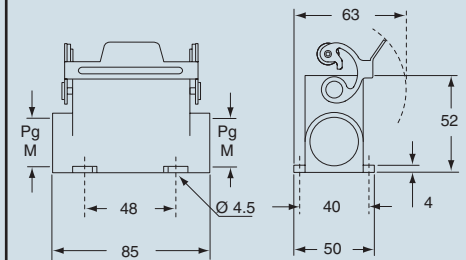


**CZI LS**

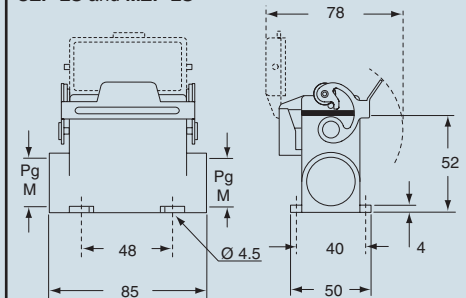


dimensions in mm

**CZP L and MZP L**



**CZP LS and MZP LS**



dimensions indicated are not binding and may be changed without notice

size 49.16



inserts:		page
<b>CD</b> .....	15 poles + ⊕	37
<b>CDA</b> .....	10 poles + ⊕	58
<b>CDC</b> .....	10 poles + ⊕	59
<b>MIXO</b> .....	1 module	124÷137

Covers L and LG versions are not suitable to be used with code pins. If this application is required please contact ILME SpA.

**hoods for single lever**



**covers**

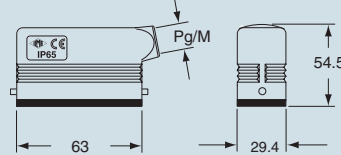


description	part No.		part No.		part No.
		entry Pg		entry M	
with pegs, side entry	<b>CZO 15 L</b>	16	<b>MZO 15 L20</b>	20	
with pegs, side entry			<b>MZO 15 L25</b>	25	
with pegs, side entry, high construction	<b>CZAO 15 L16</b>	16	<b>MZAO 15 L20</b>	20	
with pegs, side entry, high construction	<b>CZAO 15 L21</b>	21	<b>MZAO 15 L25</b>	25	
with pegs, top entry	<b>CZV 15 L</b>	13.5	<b>MZV 15 L20</b>	20	
with pegs, top entry, high construction	<b>CZAV 15 L16</b>	16	<b>MZAV 15 L20</b>	20	
with pegs, top entry, high construction	<b>CZAV 15 L21</b>	21	<b>MZAV 15 L25</b>	25	
with pegs, side entry, high construction, without adaptor			<b>MZFO 15 L20</b>	20	
with pegs, side entry, high construction, without adaptor			<b>MZFO 15 L25</b>	25	
with pegs, top entry, high construction, without adaptor			<b>MZFO 15 L20</b>	20	
with pegs, top entry, high construction, without adaptor			<b>MZFO 15 L25</b>	25	
with pegs (for enclosures with lever)					<b>CZC 15 L</b>
with basic lever (for enclosures with pegs)					<b>CZC 15 LG</b>

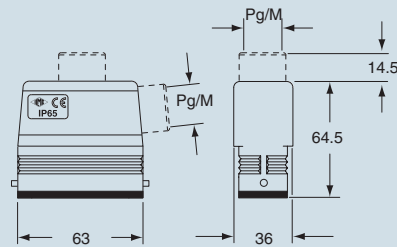
size 49.16

dimensions in mm

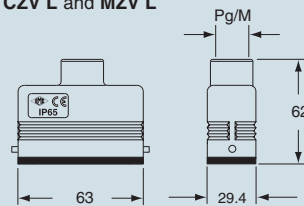
**CZO L and MZO L**



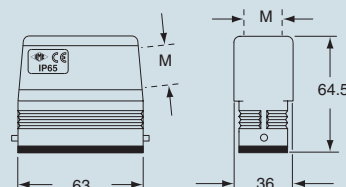
**CZAO L - MZAO L and CZAV L - MZAV L**



**CZV L and MZV L**



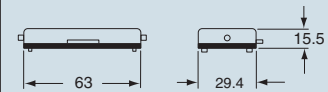
**MZFO - MZFO L**



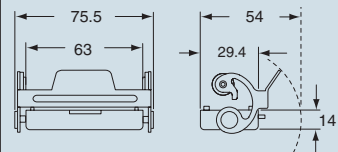
dimensions indicated are not binding and may be changed without notice

dimensions in mm

**CZC L**



**CZC LG**



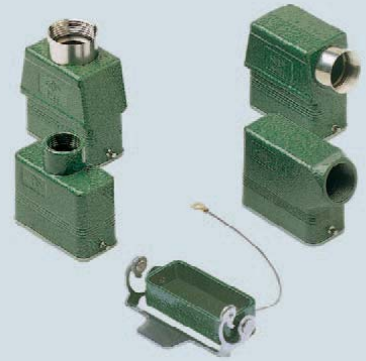
inserts:		page
CD .....	15 poles + ⊕	37
CDA .....	10 poles + ⊕	58
CDC .....	10 poles + ⊕	59
MIXO .....	1 module	124÷137

Covers L and LG versions are not suitable to be used with code pins. If this application is required please contact ILME SpA.

housings and cover

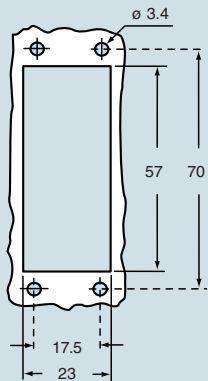


hoods and cover



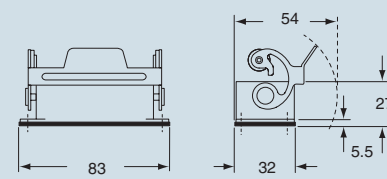
description	part No.		part No.		part No.		part No.	
		entry Pg		entry M		entry Pg		entry M
bulkhead housing, with lever	<b>CZIW 15 L</b>	---						
surface housing, with lever	<b>CZPW 15 L2</b>	16 x 2	<b>MZPW 15 L225</b>	25 x 2				
cover with pegs (for enclosures with lever)	<b>CZCW 15 L</b>							
with pegs, side entry					<b>CZOW 15 L</b>	16	<b>MZOW 15 L20</b>	20
with pegs, side entry					<b>CZAOW 15 L21</b>	21	<b>MZAOW 15 L25</b>	25
with pegs, side entry, high construction					<b>CZVW 15 L</b>	13.5	<b>MZVW 15 L20</b>	20
with pegs, top entry					<b>CZAVW 15 L21</b>	21	<b>MZAVW 15 L25</b>	25
with pegs, top entry, high construction							<b>MZFW 15 L25</b>	25
with pegs, side entry, without adaptor							<b>MZFW 15 L25</b>	25
with pegs, top entry, without adaptor								
cover with lever (for enclosures with pegs)					<b>CZCW 15 LG</b>			

panel cut-out for bulkhead mounting housings in mm

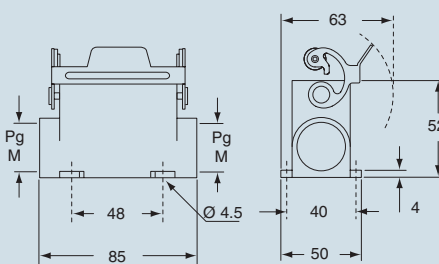


dimensions in mm

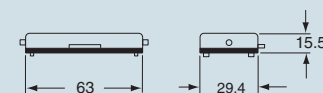
**CZIW L**



**CZPW L and MZPW L**

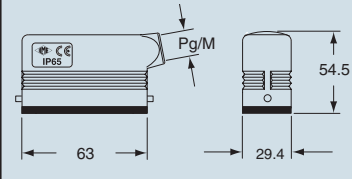


**CZCW L**

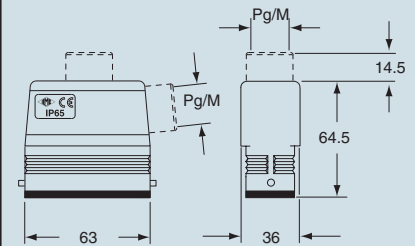


dimensions in mm

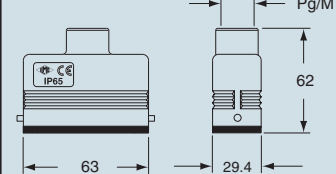
**CZOW L and MZOW L**



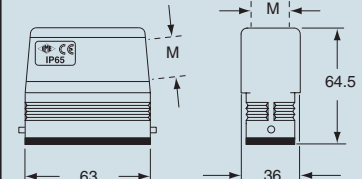
**CZAOW L - MZAOW L and CZAVW L and MZAVW L**



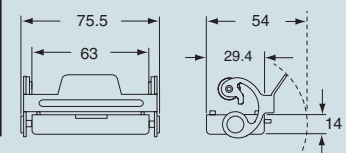
**CZVW L and MZVW L**



**MZFW L and MZFW L**



**CZCW LG**



dimensions indicated are not binding and may be changed without notice

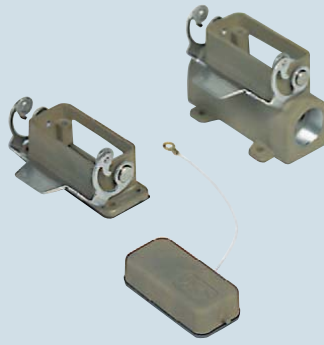
size 49.16



inserts:		page
CD	15 poles + ⊕	37
CDA	10 poles + ⊕	58
CDC	10 poles + ⊕	59
MIXO	1 module	124÷137

Covers L and LG versions are not suitable to be used with code pins. If this application is required please contact ILME SpA.

housings and cover for electromagnetic compatibility

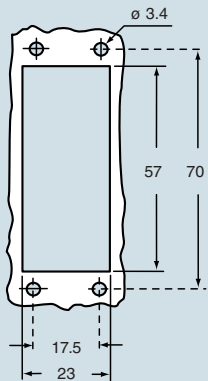


hoods and cover for electromagnetic compatibility



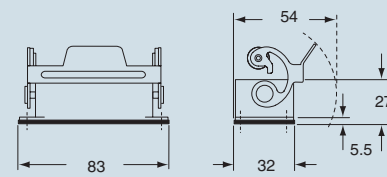
description	part No.		part No.		part No.		part No.	
		entry Pg		entry M		entry Pg		entry M
bulkhead housing, with lever	<b>CZIS 15 L</b>	---						
surface housing, with lever	<b>CZPS 15 L2</b>	16 x 2	<b>MZPS 15 L225</b>	25 x 2				
cover with pegs (for enclosures with lever)	<b>CZCS 15 L</b>							
with pegs, side entry					<b>CZOS 15 L</b>	16	<b>MZOS 15 L20</b>	20
with pegs, side entry					<b>CZAOS 15 L21</b>	21	<b>MZOS 15 L25</b>	25
with pegs, side entry, high construction					<b>CZVS 15 L</b>	13.5	<b>MZAOS 15 L25</b>	25
with pegs, top entry					<b>CZAVS 15 L21</b>	21	<b>MZVS 15 L20</b>	20
with pegs, top entry, high construction							<b>MZAVS 15 L25</b>	25
with pegs, side entry, without adaptor							<b>MZFOS 15 L25</b>	25
with pegs, top entry, without adaptor							<b>MZFVS 15 L25</b>	25
cover with lever (for enclosures with pegs)					<b>CZCS 15 LG</b>			

panel cut-out for bulkhead mounting housings in mm

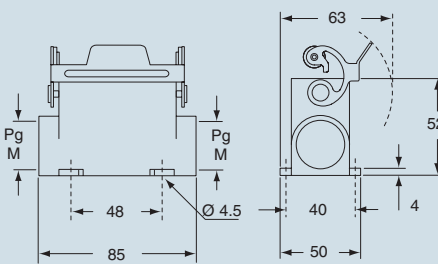


dimensions in mm

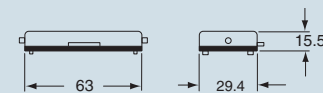
**CZIS L**



**CZPS L and MZPS L**

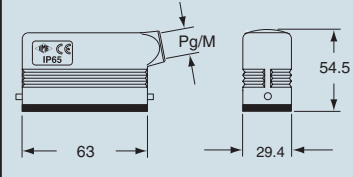


**CZCS L**

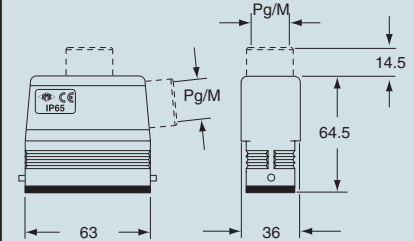


dimensions in mm

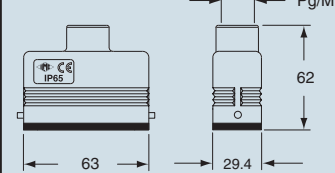
**CZOS L and MZOS L**



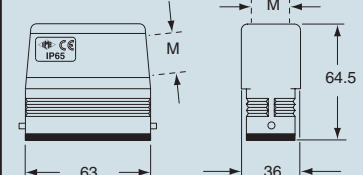
**CZAOS L - MZAOS L and CZAVS L and MZAVS L**



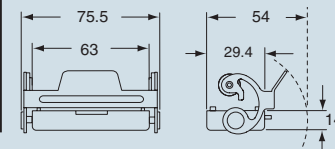
**CZVS L and MZVS L**



**MZFOS L and MZFVS L**



**CZCS LG**



dimensions indicated are not binding and may be changed without notice

size 49.16



inserts:		page
CD .....	25 poles + ⊕	38
CDD .....	38 poles + ⊕	50
CDA .....	16 poles + ⊕	60
CDC .....	16 poles + ⊕	61

**bulkhead mounting housings with single lever**

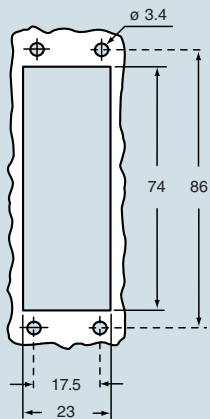


**surface mounting housings with single lever**



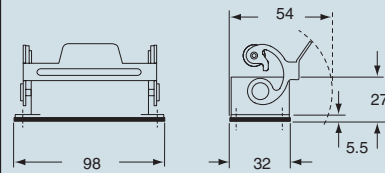
description	part No.		entry Pg	part No.		entry M
with basic lever	<b>CZI 25 L</b>					
with basic lever and cover	<b>CZI 25 LS</b>					
with basic lever, high construction			<b>CZAP 25 L</b>	16		
with basic lever, high construction			<b>CZAP 25 L2</b>	16 x 2	<b>MZAP 25 L225</b>	25 x 2
with basic lever, high construction			<b>CZAP 25 L21</b>	21	<b>MZAP 25 L25</b>	25
with basic lever and cover, high construction			<b>CZAP 25LS221</b>	21 x 2	<b>MZAP 25LS225</b>	25 x 2

panel cut-out for bulkhead mounting housings in mm

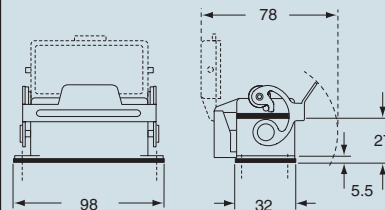


dimensions in mm

**CZI L**

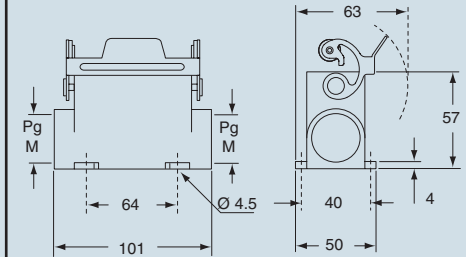


**CZI LS**

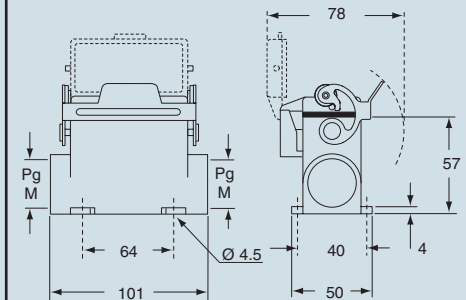


dimensions in mm

**CZAP L and MZAP L**



**CZAP LS and MZAP LS**



dimensions indicated are not binding and may be changed without notice

size 66.16



inserts:		page
<b>CD</b> .....	25 poles + ⊕	38
<b>CDD</b> .....	38 poles + ⊕	50
<b>CDA</b> .....	16 poles + ⊕	60
<b>CDC</b> .....	16 poles + ⊕	61

Covers L and LG versions are not suitable to be used with code pins. If this application is required please contact ILME SpA.

**hoods for single lever**



**covers**

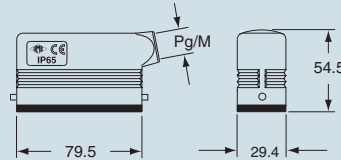


description	part No.		part No.		part No.
		entry Pg		entry M	
with pegs, side entry	<b>CZO 25 L</b>	16	<b>MZO 25 L20</b>	20	
with pegs, side entry			<b>MZO 25 L25</b>	25	
with pegs, side entry, high construction	<b>CZAO 25 L16</b>	16	<b>MZAO 25 L20</b>	20	
with pegs, side entry, high construction	<b>CZAO 25 L21</b>	21	<b>MZAO 25 L25</b>	25	
with pegs, top entry	<b>CZV 25 L</b>	16	<b>MZV 25 L20*</b>	20	
with pegs, top entry, high construction	<b>CZAV 25 L16</b>	16	<b>MZAV 25 L20</b>	20	
with pegs, top entry, high construction	<b>CZAV 25 L21</b>	21	<b>MZAV 25 L25</b>	25	
with pegs, side entry, high construction, without adaptor			<b>MZFO 25 L20</b>	20	
with pegs, side entry, high construction, without adaptor			<b>MZFO 25 L25</b>	25	
with pegs, top entry, high construction, without adaptor			<b>MZFO 25 L20</b>	20	
with pegs, top entry, high construction, without adaptor			<b>MZFO 25 L25</b>	25	
with pegs (for enclosures with lever)					<b>CZC 25 L</b>
with basic lever (for enclosures with pegs)					<b>CZC 25 LG</b>

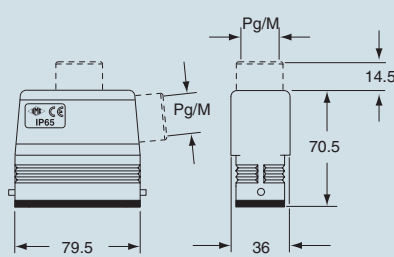
\* to be used only with cable gland (to be ordered separately).

dimensions in mm

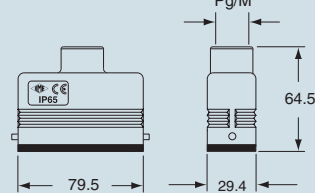
**CZO L and MZO L**



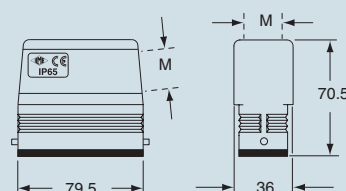
**CZAO L - MZAO L and CZAV L - MZAV L**



**CZV L and MZV L**



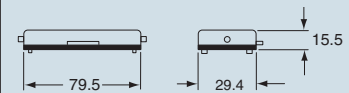
**MZFO - MZFO L**



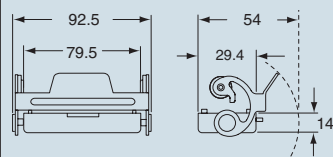
dimensions indicated are not binding and may be changed without notice

dimensions in mm

**CZC L**



**CZC LG**



size 66.16

inserts:		page
CD .....	25 poles + ⊕	38
CDD .....	38 poles + ⊕	50
CDA .....	16 poles + ⊕	60
CDC .....	16 poles + ⊕	61

Covers L and LG versions are not suitable to be used with code pins. If this application is required please contact ILME SpA.

housings and cover

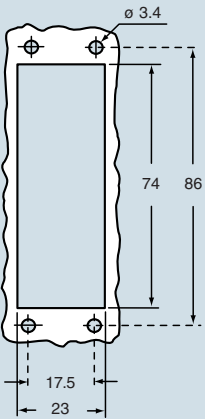


hoods and cover



description	part No.		part No.		part No.		part No.	
		entry Pg		entry M		entry Pg		entry M
bulkhead housing, with lever	<b>CZIW 25 L</b>	---						
surface housing, with lever, high construction	<b>CZAPW 25 L2</b>	16 x 2	<b>MZAPW 25L225</b>	25 x 2				
cover with pegs (for enclosures with lever)	<b>CZCW 25 L</b>							
with pegs, side entry					<b>CZOW 25 L</b>	16	<b>MZOW 25 L20</b>	20
with pegs, side entry							<b>MZOW 25 L25</b>	25
with pegs, side entry, high construction					<b>CZAOW 25 L21</b>	21	<b>MZAOW 25 L25</b>	25
with pegs, top entry					<b>CZVW 25 L</b>	16	<b>MZVW 25 L20*</b>	20
with pegs, top entry, high construction					<b>CZAVW 25 L21</b>	21	<b>MZAVW 25 L25</b>	25
with pegs, side entry, without adaptor							<b>MZFOW 25 L25</b>	25
with pegs, top entry, without adaptor							<b>MZFWV 25 L25</b>	25
cover with lever (for enclosures with pegs)					<b>CZCW 25 LG</b>			

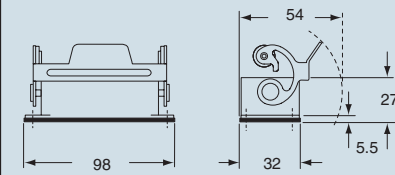
panel cut-out for bulkhead mounting housings in mm



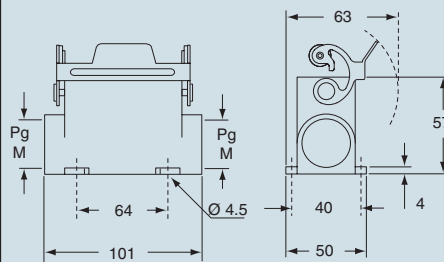
\* to be used only with cable gland (to be ordered separately).

dimensions in mm

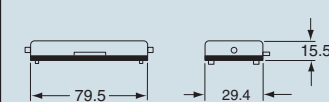
**CZIW L**



**CZAPW L and MZAPW L**

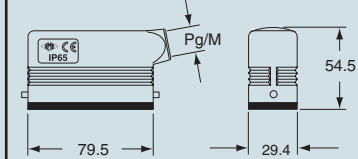


**CZCW L**

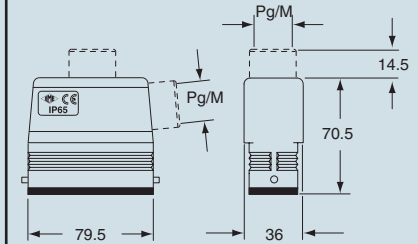


dimensions in mm

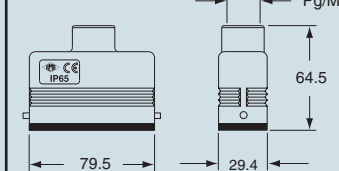
**CZOW L and MZOW L**



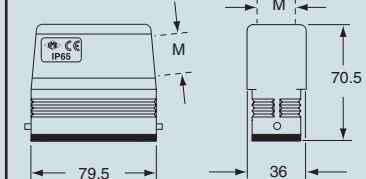
**CZAOW L - MZAOW L and CZAVW L - MZAVW L**



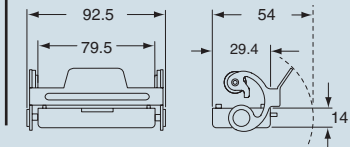
**CZVW L and MZVW L**



**MZFOW - MZFWV L**



**CZCW LG**



dimensions indicated are not binding and may be changed without notice

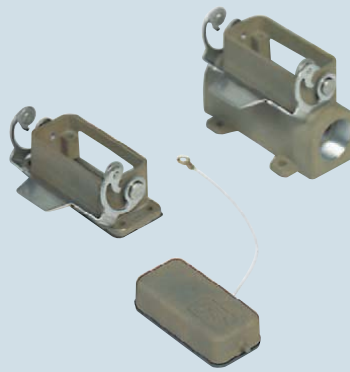
size 66.16



inserts:		page
CD .....	25 poles + ⊕	38
CDD .....	38 poles + ⊕	50
CDA .....	16 poles + ⊕	60
CDC .....	16 poles + ⊕	61

Covers L and LG versions are not suitable to be used with code pins. If this application is required please contact ILME SpA.

housings and cover for electromagnetic compatibility

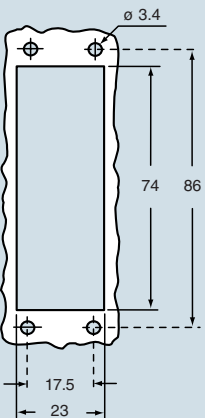


hoods and cover for electromagnetic compatibility



description	part No.		entry		part No.		entry		
			Pg	M			Pg	M	
bulkhead housing, with lever	<b>CZIS 25 L</b>	---	---	---					
surface housing, with lever, high construction	<b>CZAPS 25 L2</b>	16 x 2		<b>MZAPS 25L225</b>	25 x 2				
cover with pegs (for enclosures with lever)	<b>CZCS 25 L</b>								
with pegs, side entry						<b>CZOS 25 L</b>	16	<b>MZOS 25 L20</b>	20
with pegs, side entry								<b>MZOS 25 L25</b>	25
with pegs, side entry, high construction						<b>CZAOS 25 L21</b>	21	<b>MZAOS 25 L25</b>	25
with pegs, top entry						<b>CZVS 25 L</b>	16	<b>MZVS 25 L20*</b>	20
with pegs, top entry, high construction						<b>CZAVS 25 L21</b>	21	<b>MZAVS 25 L25</b>	25
with pegs, side entry, without adaptor								<b>MZFOS 25 L25</b>	25
with pegs, top entry, without adaptor								<b>MZVFS 25 L25</b>	25
cover with lever (for enclosures with pegs)						<b>CZCS 25 LG</b>			

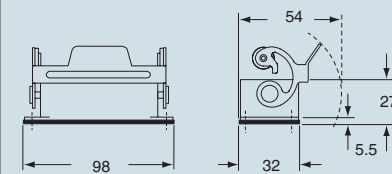
panel cut-out for bulkhead mounting housings in mm



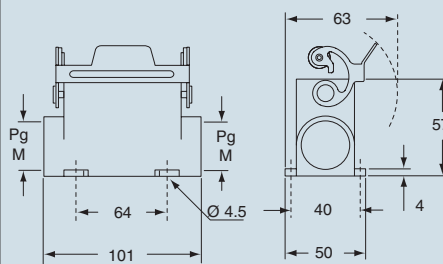
\* to be used only with cable gland (to be ordered separately).

dimensions in mm

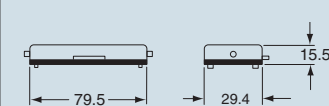
**CZIS L**



**CZAPS L and MZAPS L**

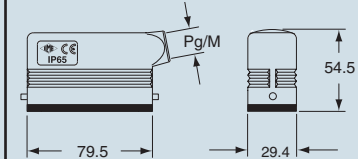


**CZCS L**

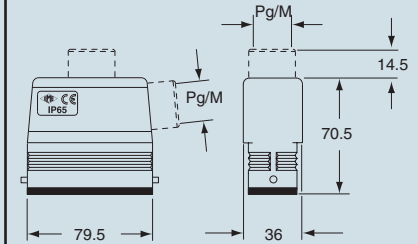


dimensions in mm

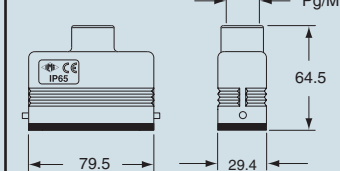
**CZOS L and MZOS L**



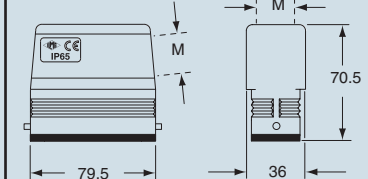
**CZAOS L - MZAOS L and CZAVS L - MZAVS L**



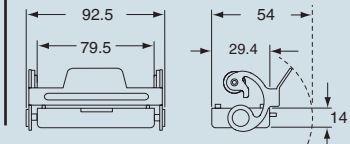
**CZVS L and MZVS L**



**MZFOS - MZVFS L**



**CZCS LG**



dimensions indicated are not binding and may be changed without notice

size 66.16