

Use

The MIXO series is a system of modular units for special applications that uses the traditional ILME enclosures.

Each enclosure can house different types of connections such as, for example: electric signals and contacts for the conduction of compressed air and liquids with pressure values of up to 8 bars.

The inserts are arranged side by side to form a single compact block which is inserted into metallic frames with mandatory housings. Once the modules have been inserted and locked with the special tabs, the connector can then be inserted into the enclosure.

The modular structure system makes it easy to access a series of contacts inserted in the frame (e.g., for substitution, checks or the addition of signals with new inserts for needs not foreseen during the initial installation) without having to disassemble the entire connector.

The use of standard die-cast aluminium enclosures with degree of protection IP65 provides the possibility of innumerable applications.

The MIXO series may be used with 5 different frame sizes. The following table lists the frames and the metallic enclosures that may be used.

frames	one or two-lever metallic enclosures
CX 01 T	size "49.16"
CX 02 TM/TF	size "44.27"
CX 03 TM/TF	size "57.27"
CX 04 TM/TF	size "77.27"
CX 06 TM/TF	size "104.27"
CX 04 TM/TF (x 2)	size "77.62"
CX 06 TM/TF (x 2)	size "104.62"

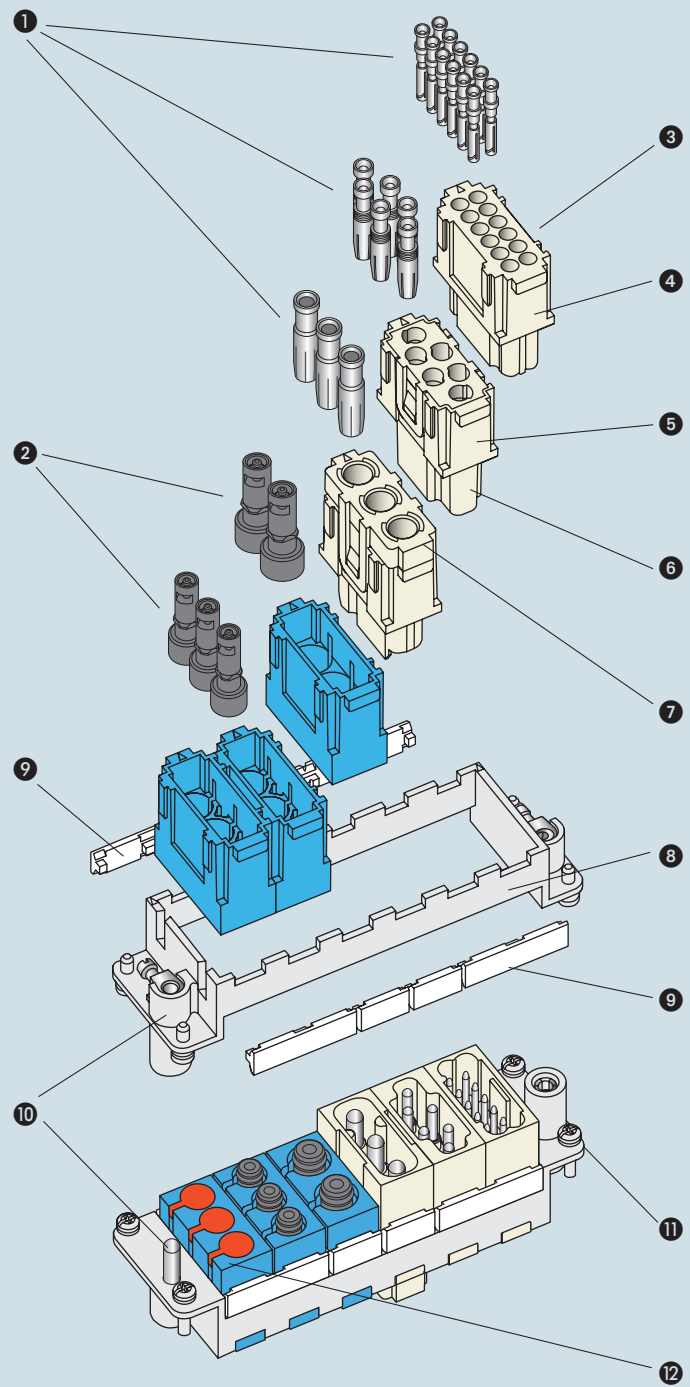
In addition, the MIXO series can be used with the COB series panel supports

frames	panel supports part No.
CX 02 TM/TF	fixed: COB 06 BC and COB TCQ
	mobile: COB TSF , COB TSFS and COB 06 CMS
CX 03 TM/TF	fixed: COB 10 BC and COB TCQ
	mobile: COB TSF , COB TSFS and COB 10 CMS
CX 04 TM/TF	fixed: COB 16 BC and COB TCQ
	mobile: COB TSF , COB TSFS and COB 16 CMS
CX 06 TM/TF	fixed: COB 24 BC and COB TCQ
	mobile: COB TSF , COB TSFS and COB 24 CMS

The MIXO series currently includes 6 different types of inserts. The field of application is provided in the table at the bottom of the next page.

Characteristics

- ① electric contacts in silver-plated or gold-plated brass with connections to the conductors via crimping.
- ② pneumatic contacts in plastic with insertion tube connection
- ③ modular inserts of identical size with insertion system for forming the complete module and frame lock tab.
- ④ inserts in self-extinguishing thermoplastic material, reinforced with glass fibre, UL approved, with a working temperature range of -40 °C to +125 °C.
- ⑤ inserts in conformance with the requirements of the EN 61984 standard and certified and marked with the UL and CSA marks.
- ⑥ inserts with asymmetric guide rails to prevent incorrect coupling.
- ⑦ position of contacts identified with numbers or codes on both sides of every insert.
- ⑧ male/female module carrier frames with mandatory housings and polarity, in die-cast zinc alloy.
- ⑨ module lock tab, may be divided according to the number of modules used; guarantees a perfect stability of the modules during wiring and coupling/uncoupling of the connectors.
- ⑩ asymmetric earth contacts (two for frame) with wide contact surface prevent incorrect coupling; when two or more identical connectors of the MIXO series are used, coded pins prevent incorrect coupling (see pages 242 and 243).
- ⑪ captive frame fastening screws, with flexible spring washer.
- ⑫ dummy module for unused frame slots.



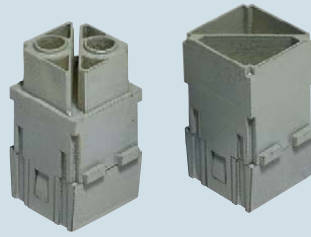
inserts	contact type	signal type	connectors and tubes connections	rated current A max	rated voltage V	catalogue index pages
CX 02 GF/M	main	electric	crimp	100	1000	124
CX 02 4AF/M	main	electric	axial screw	40	1000	125
CX 03 4F/M	main	electric	crimp	40	400/690	126
CX 05 SF/M	main	electric	spring	16	400	130
CX 06 CF/M	main	electric	crimp	16	500	127
CX 08 CF/M	main	electric	crimp	16	400	128
CX 12 DF/M	main / auxiliary	electric	crimp	10	250	131
CX 02 HF/M	main	electric	crimp	16	2900/5000	133
CX 02 BF/M	multiaxial connectors	see CX 04 B	---	---	---	134
CX 01 BF/M	main / auxiliary + shield	electric	crimp	10	50	134
CX 04 BF/M	main / auxiliary + shield	electric	crimp	10	50	134
CX 03 P	pneumatic Ø 1.6 - 3.0 - 4.0 mm	gas / liquid **	insertion	---	---	135
CX 02 P	pneumatic Ø 6.0 mm	gas / liquid **	insertion	---	---	135
CX FM	none (dummy module)	---	---	---	---	137

** **Warning:** For obvious reasons of safety, the VDE standard does not permit electric contacts to be present within the same connector group together with contacts for the transmission of liquids. In addition, the use of pneumatic air contacts requires an appropriate filtering and dehydration system to prevent dangerous condensation. Contacts may be used for pressure values of up to a maximum of 8 bar/116 psi.

the modular inserts must be installed in suitable frames which in turn are installed in traditional housings or COB panel support

frames for modular units page: 137

modular units,
crimp connections



100A crimp contacts silver plated
adaptor



description

part No.

part No.

without contacts (to be ordered separately)
- female inserts for female contacts
- male inserts for female contacts

CX 02 GF
CX 02 GM

100A female crimp contacts
10÷16 mm² AWG 8÷6
16÷25 mm² AWG 6÷4
25÷35 mm² AWG 4÷2

CGFA 16
CGFA 25
CGFA 35

100A male crimp contacts
10÷16 mm² AWG 8÷6
16÷25 mm² AWG 6÷4
25÷35 mm² AWG 4÷2

CGMA 16
CGMA 25
CGMA 35

silver plated

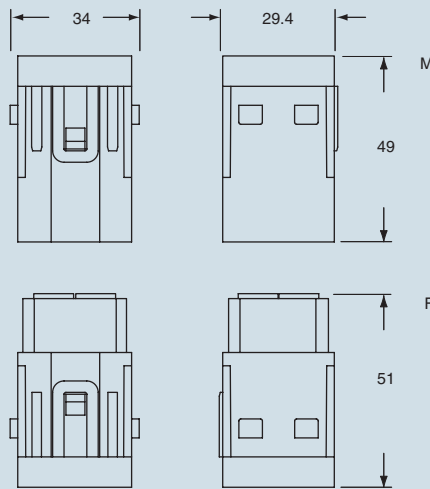
cable earthing adaptor 16 mm²

CGT 16

Note:
Crimping tool CGPZ and removal tool CGES in preparation.

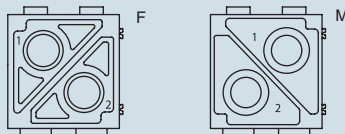
Use of adaptor:
1) Secure the 16 mm² cable with the crimping tool
2) Insert the adaptor in the earth terminal of frames CX..TM/TF

dimensions in mm

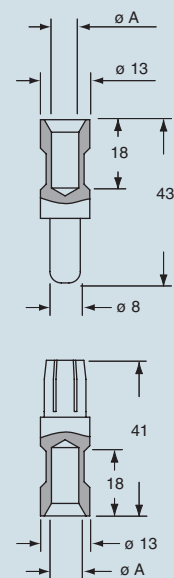


terminal side (front view)

side with reference arrow ▲



dimensions in mm



CGF and CGM contacts

conductor section mm ²	ø slot A (mm)
16	5.5
25	7.0
35	8.2

- stripping length see table at page 13

dimensions indicated are not binding and may be changed without notice

the modular inserts must be installed in suitable frames which in turn are installed in traditional housings or COB panel support

frames for modular units page: 137

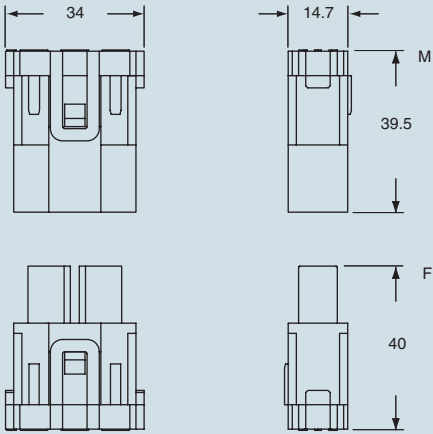
- limit current curves of the inserts see page 31

**modular units,
screw terminal connection**



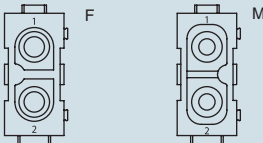
description	part No.
- female inserts with female contacts	CX 02 4AF
- male inserts with female contacts	CX 02 4AM

dimensions in mm



terminal side (front view)

side with reference arrow ▲



- inserts for section conductors:
2.5÷10 mm² - AWG 14÷8
- stripping length see table at page 13

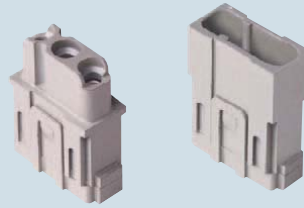
dimensions indicated are not binding and may be changed without notice

the modular inserts must be installed in suitable frames which in turn are installed in traditional housings or COB panel support

frames for modular units page: 137

- limit current curves of the inserts see page 31
 - tools for crimp contacts see pages 250 and 252

modular units,
crimp connections



40A crimp contacts
silver plated



description

part No.

part No.

without contacts (to be ordered separately)
 - female inserts for female contacts
 - male inserts for female contacts

CX 03 4F
CX 03 4M

40A female crimp contacts
 1.5 mm² AWG 16
 2.5 mm² AWG 14
 4 mm² AWG 12
 6 mm² AWG 10

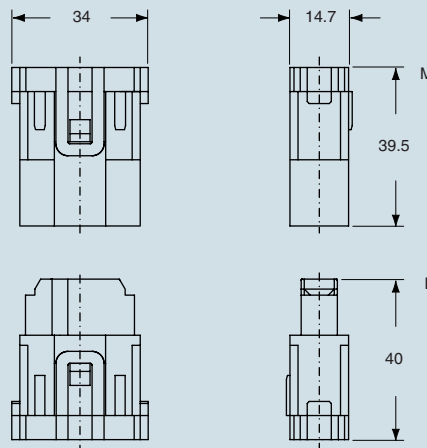
CXFA 1.5
CXFA 2.5
CXFA 4.0
CXFA 6.0

silver plated

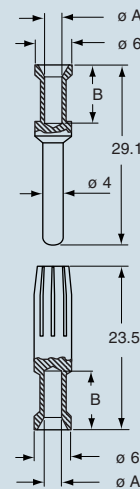
40A male crimp contacts
 1.5 mm² AWG 16
 2.5 mm² AWG 14
 4 mm² AWG 12
 6 mm² AWG 10

CXMA 1.5
CXMA 2.5
CXMA 4.0
CXMA 6.0

dimensions in mm

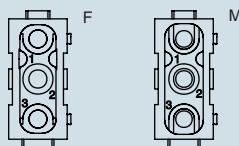


dimensions in mm



terminal side (front view)

side with reference arrow ▲



CXF and CXM contacts

conductor section mm ²	conductor slot	
	ø A (mm)	B (mm)
1.5	1.75	9
2.5	2.25	9
4	2.85	9.6
6	3.5	9.6

- stripping length see table at page 13

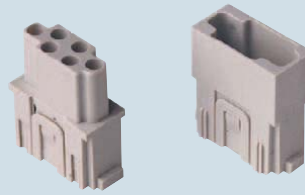
dimensions indicated are not binding and may be changed without notice

the modular inserts must be installed in suitable frames which in turn are installed in traditional housings or COB panel support

frames for modular units page: 137

- limit current curves of the inserts see page 31
 - tools for crimp contacts see pages 248, 252, 254 and 256

modular units,
crimp connections



16A crimp contacts
normal or for advanced opening
silver and gold plated



description

part No.

part No.

part No.

without contacts (to be ordered separately)
 - female inserts for female contacts
 - male inserts for female contacts

CX 06 CF
CX 06 CM

16A female crimp contacts

0.5 mm ²	AWG 20	with no grooves
0.75 mm ²	AWG 18	one groove (back side)
1 mm ²	AWG 18	one groove
1.5 mm ²	AWG 16	two grooves
2.5 mm ²	AWG 14	three grooves
3 mm ²	AWG 12	one wide groove
4 mm ²	AWG 12	with no grooves

16A male crimp contacts

0.5 mm ²	AWG 20	with no grooves
0.75 mm ²	AWG 18	one groove (back side)
1 mm ²	AWG 18	one groove
1.5 mm ²	AWG 16	two grooves
2.5 mm ²	AWG 14	three grooves
3 mm ²	AWG 12	one wide groove
4 mm ²	AWG 12	with no grooves

16A male crimp contacts for advanced opening

0.5 mm ²	AWG 20	with no grooves
0.75 mm ²	AWG 18	one groove (back side)
1 mm ²	AWG 18	one groove
1.5 mm ²	AWG 16	two grooves
2.5 mm ²	AWG 14	three grooves

CCFA 0.5
CCFA 0.7
CCFA 1.0
CCFA 1.5
CCFA 2.5
CCFA 3.0
CCFA 4.0

silver plated

CCFD 0.5
CCFD 0.7
CCFD 1.0
CCFD 1.5
CCFD 2.5
CCFD 3.0
CCFD 4.0

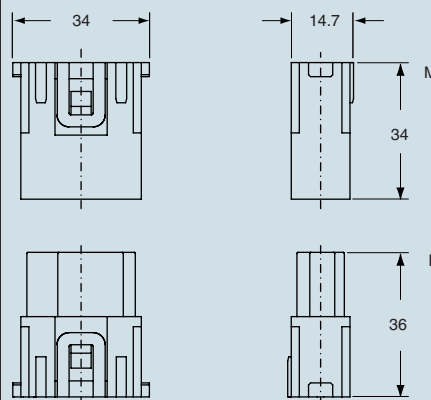
gold plated

CCMA 0.5
CCMA 0.7
CCMA 1.0
CCMA 1.5
CCMA 2.5
CCMA 3.0
CCMA 4.0

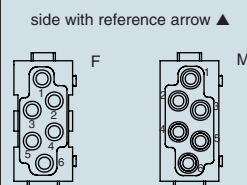
CCMD 0.5
CCMD 0.7
CCMD 1.0
CCMD 1.5
CCMD 2.5
CCMD 3.0
CCMD 4.0

CC 0.5 AN
CC 0.7 AN
CC 1.0 AN
CC 1.5 AN
CC 2.5 AN

dimensions in mm

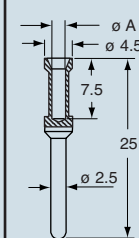


terminal side (front view)

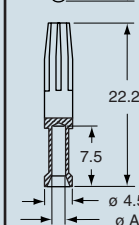
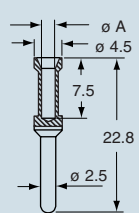


dimensions in mm

CCF and CCM



CC...AN



CCF, CCM and CC...AN contacts

conductor section mm ²	ø slot A (mm)
0.5	1.1
0.75	1.3
1.0	1.45
1.5	1.8
2.5	2.2
3	2.55
4	2.85

- stripping length see table at page 13

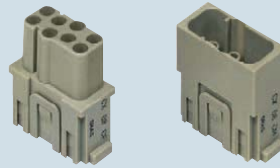
dimensions indicated are not binding and may be changed without notice

the modular inserts must be installed in suitable frames which in turn are installed in traditional housings or COB panel support

frames for modular units page: 137

- limit current curves of the inserts see page 31
 - tools for crimp contacts see pages 248, 252, 254 and 256

modular units,
crimp connections



16A crimp contacts
normal or for advanced opening
silver and gold plated



description

part No.

part No.

part No.

without contacts (to be ordered separately)
 - female inserts for female contacts
 - male inserts for female contacts

CX 08 CF
CX 08 CM

16A female crimp contacts

0.5 mm ²	AWG 20	with no grooves
0.75 mm ²	AWG 18	one groove (back side)
1 mm ²	AWG 18	one groove
1.5 mm ²	AWG 16	two grooves
2.5 mm ²	AWG 14	three grooves
3 mm ²	AWG 12	one wide groove
4 mm ²	AWG 12	with no grooves

16A male crimp contacts

0.5 mm ²	AWG 20	with no grooves
0.75 mm ²	AWG 18	one groove (back side)
1 mm ²	AWG 18	one groove
1.5 mm ²	AWG 16	two grooves
2.5 mm ²	AWG 14	three grooves
3 mm ²	AWG 12	one wide groove
4 mm ²	AWG 12	with no grooves

16A male crimp contacts for advanced opening

0.5 mm ²	AWG 20	with no grooves
0.75 mm ²	AWG 18	one groove (back side)
1 mm ²	AWG 18	one groove
1.5 mm ²	AWG 16	two grooves
2.5 mm ²	AWG 14	three grooves

CCFA 0.5
CCFA 0.7
CCFA 1.0
CCFA 1.5
CCFA 2.5
CCFA 3.0
CCFA 4.0

silver plated

CCFD 0.5
CCFD 0.7
CCFD 1.0
CCFD 1.5
CCFD 2.5
CCFD 3.0
CCFD 4.0

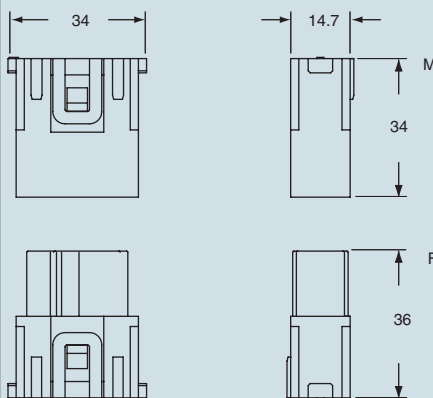
gold plated

CCMA 0.5
CCMA 0.7
CCMA 1.0
CCMA 1.5
CCMA 2.5
CCMA 3.0
CCMA 4.0

CCMD 0.5
CCMD 0.7
CCMD 1.0
CCMD 1.5
CCMD 2.5
CCMD 3.0
CCMD 4.0

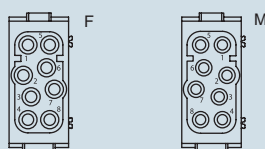
CC 0.5 AN
CC 0.7 AN
CC 1.0 AN
CC 1.5 AN
CC 2.5 AN

dimensions in mm



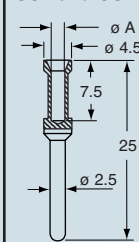
terminal side (front view)

side with reference arrow ▲

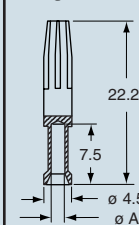
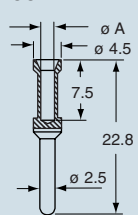


dimensions in mm

CCF and CCM



CC...AN



CCF, CCM and CC...AN contacts

conductor section mm ²	ø slot A (mm)
0.5	1.1
0.75	1.3
1.0	1.45
1.5	1.8
2.5	2.2
3	2.55
4	2.85

- stripping length see table at page 13

dimensions indicated are not binding and may be changed without notice

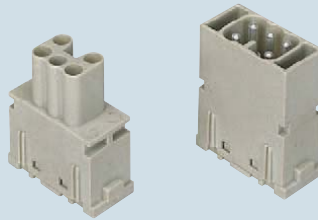


the modular inserts must be installed in suitable frames which in turn are installed in traditional housings or COB panel support

frames for modular units page: 137

- limit current curves of the inserts see page 31

**modular units,
spring connection**



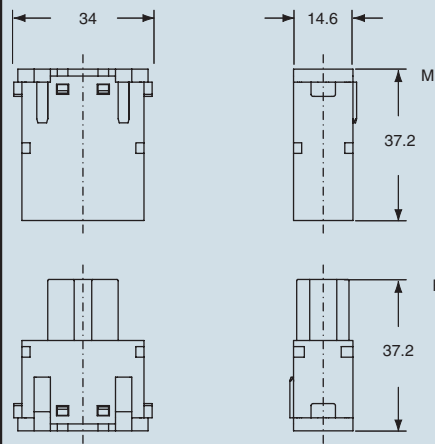
description

- female inserts with female contacts
- male inserts with male contacts

part No.

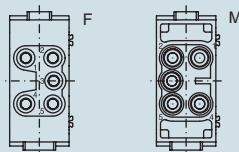
- CX 05 SF**
- CX 05 SM**

dimensions in mm



terminal side (front view)

side with reference arrow ▲



- inserts for section conductors:
0.14 ÷ 2.5 mm² - AWG 26 ÷ 14
- stripping length see table at page 13

dimensions indicated are not binding and may be changed without notice

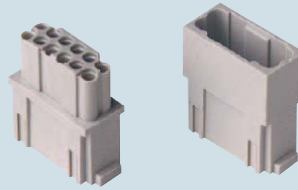
MIXO

the modular inserts must be installed in suitable frames which in turn are installed in traditional housings or COB panel support

frames for modular units..... page: 137

- limit current curves of the inserts see page 31
- tools for crimp contacts see pages 248, 252, 254 and 256
- see page 235 for interfaces with printed circuits

modular units, crimp connections



10A crimp contacts silver and gold plated



description	part No.	part No.	part No.
-------------	----------	----------	----------

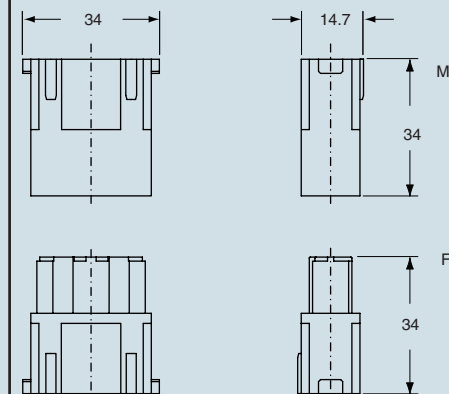
without contacts (to be ordered separately)
 - female inserts for female contacts
 - male inserts for female contacts

CX 12 DF
 CX 12 DM

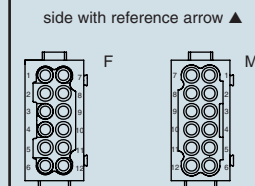
10A female crimp contacts	
0.14÷0.37 mm ²	AWG 26÷22
0.5 mm ²	AWG 20
0.75 mm ²	AWG 18
1 mm ²	AWG 18
1.5 mm ²	AWG 16
2.5 mm ²	AWG 14
10A male crimp contacts	
0.14÷0.37 mm ²	AWG 26÷22
0.5 mm ²	AWG 20
0.75 mm ²	AWG 18
1 mm ²	AWG 18
1.5 mm ²	AWG 16
2.5 mm ²	AWG 14

CDFA 0.3	silver plated	CDFD 0.3	gold plated
CDFA 0.5		CDFD 0.5	
CDFA 0.7		CDFD 0.7	
CDFA 1.0		CDFD 1.0	
CDFA 1.5		CDFD 1.5	
CDFA 2.5		CDFD 2.5	
CDMA 0.3	silver plated	CDMD 0.3	gold plated
CDMA 0.5		CDMD 0.5	
CDMA 0.7		CDMD 0.7	
CDMA 1.0		CDMD 1.0	
CDMA 1.5		CDMD 1.5	
CDMA 2.5		CDMD 2.5	

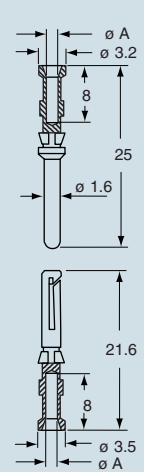
dimensions in mm



terminal side (front view)



dimensions in mm



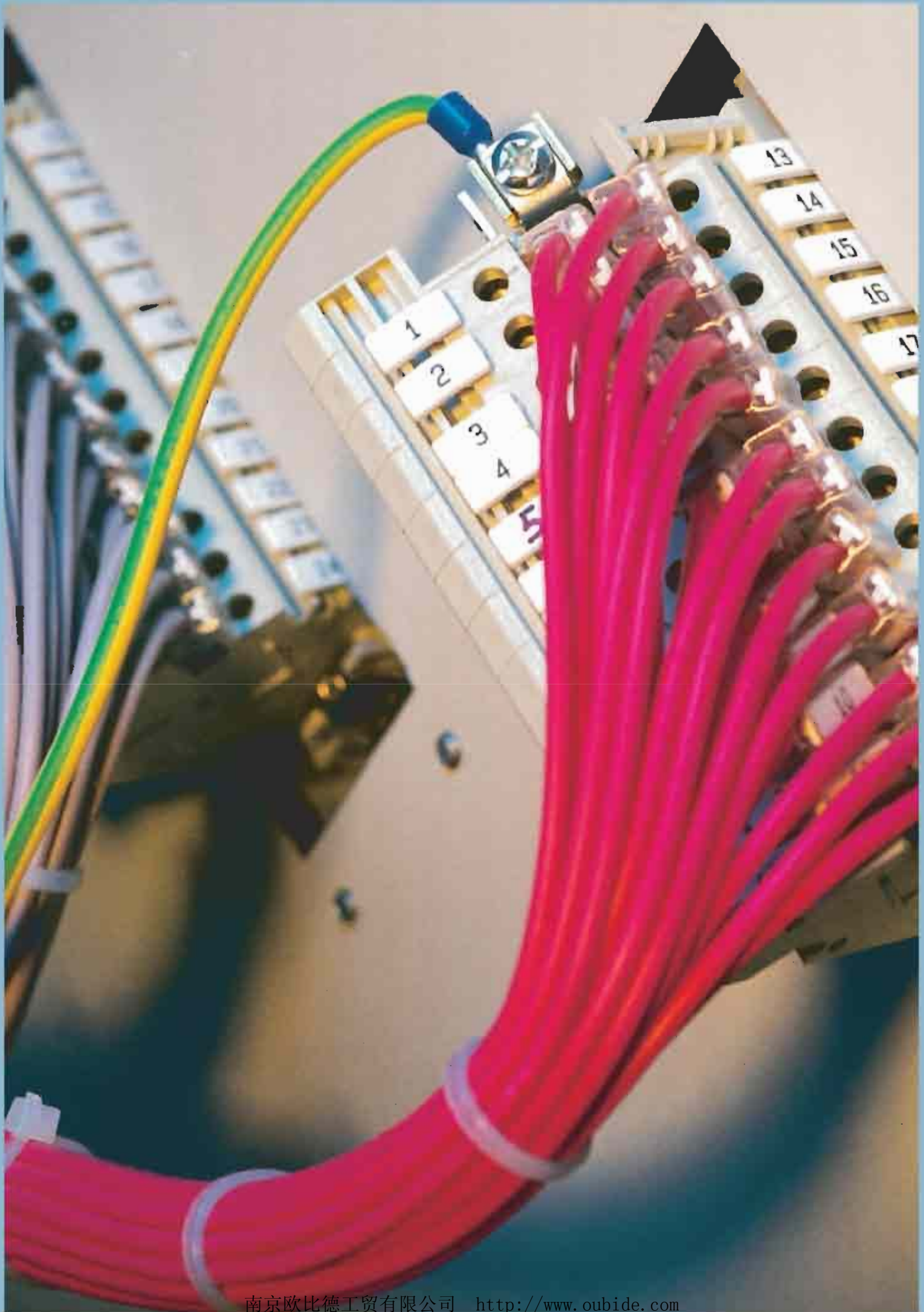
CDF and CDM contacts

conductor section mm ²	ø slot A (mm)
0.14÷0.37	0.9
0.5	1.1
0.75	1.3
1.0	1.45
1.5	1.8
2.5	2.2

- stripping length see table at page 13

dimensions indicated are not binding and may be changed without notice

MIXO



the modular inserts must be installed in suitable frames which in turn are installed in traditional housings or COB panel support

frames for modular units page: 137

- tools for crimp contacts see pages 248, 252, 254 and 256

modular units high voltage, crimp connections

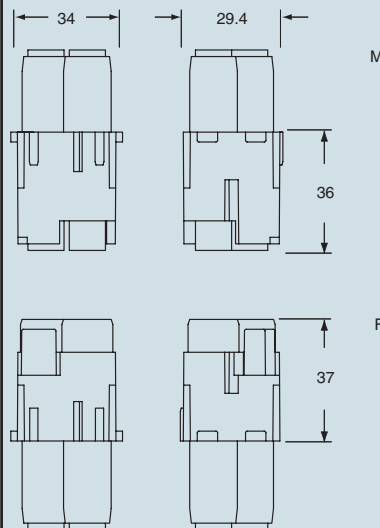


16A crimp contacts silver and gold plated



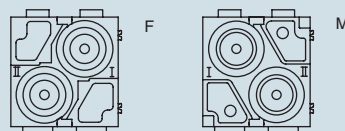
description	part No.	part No.	part No.																																																																						
without contacts (to be ordered separately) - female inserts high voltage for female contacts - male inserts high voltage for male contacts	CX 02 HF CX 02 HM																																																																								
<p>16A female crimp contacts</p> <table border="0"> <tr><td>0.5 mm²</td><td>AWG 20</td><td>with no grooves</td></tr> <tr><td>0.75 mm²</td><td>AWG 18</td><td>one groove (back side)</td></tr> <tr><td>1 mm²</td><td>AWG 18</td><td>one groove</td></tr> <tr><td>1.5 mm²</td><td>AWG 16</td><td>two grooves</td></tr> <tr><td>2.5 mm²</td><td>AWG 14</td><td>three grooves</td></tr> <tr><td>3 mm²</td><td>AWG 12</td><td>one wide groove</td></tr> <tr><td>4 mm²</td><td>AWG 12</td><td>with no grooves</td></tr> </table> <p>16A male crimp contacts</p> <table border="0"> <tr><td>0.5 mm²</td><td>AWG 20</td><td>with no grooves</td></tr> <tr><td>0.75 mm²</td><td>AWG 18</td><td>one groove (back side)</td></tr> <tr><td>1 mm²</td><td>AWG 18</td><td>one groove</td></tr> <tr><td>1.5 mm²</td><td>AWG 16</td><td>two grooves</td></tr> <tr><td>2.5 mm²</td><td>AWG 14</td><td>three grooves</td></tr> <tr><td>3 mm²</td><td>AWG 12</td><td>one wide groove</td></tr> <tr><td>4 mm²</td><td>AWG 12</td><td>with no grooves</td></tr> </table>	0.5 mm ²	AWG 20	with no grooves	0.75 mm ²	AWG 18	one groove (back side)	1 mm ²	AWG 18	one groove	1.5 mm ²	AWG 16	two grooves	2.5 mm ²	AWG 14	three grooves	3 mm ²	AWG 12	one wide groove	4 mm ²	AWG 12	with no grooves	0.5 mm ²	AWG 20	with no grooves	0.75 mm ²	AWG 18	one groove (back side)	1 mm ²	AWG 18	one groove	1.5 mm ²	AWG 16	two grooves	2.5 mm ²	AWG 14	three grooves	3 mm ²	AWG 12	one wide groove	4 mm ²	AWG 12	with no grooves		<p>silver plated</p> <table border="0"> <tr><td>CCFA 0.5</td><td>CCFD 0.5</td></tr> <tr><td>CCFA 0.7</td><td>CCFD 0.7</td></tr> <tr><td>CCFA 1.0</td><td>CCFD 1.0</td></tr> <tr><td>CCFA 1.5</td><td>CCFD 1.5</td></tr> <tr><td>CCFA 2.5</td><td>CCFD 2.5</td></tr> <tr><td>CCFA 3.0</td><td>CCFD 3.0</td></tr> <tr><td>CCFA 4.0</td><td>CCFD 4.0</td></tr> </table>	CCFA 0.5	CCFD 0.5	CCFA 0.7	CCFD 0.7	CCFA 1.0	CCFD 1.0	CCFA 1.5	CCFD 1.5	CCFA 2.5	CCFD 2.5	CCFA 3.0	CCFD 3.0	CCFA 4.0	CCFD 4.0	<p>gold plated</p> <table border="0"> <tr><td>CCMA 0.5</td><td>CCMD 0.5</td></tr> <tr><td>CCMA 0.7</td><td>CCMD 0.7</td></tr> <tr><td>CCMA 1.0</td><td>CCMD 1.0</td></tr> <tr><td>CCMA 1.5</td><td>CCMD 1.5</td></tr> <tr><td>CCMA 2.5</td><td>CCMD 2.5</td></tr> <tr><td>CCMA 3.0</td><td>CCMD 3.0</td></tr> <tr><td>CCMA 4.0</td><td>CCMD 4.0</td></tr> </table>	CCMA 0.5	CCMD 0.5	CCMA 0.7	CCMD 0.7	CCMA 1.0	CCMD 1.0	CCMA 1.5	CCMD 1.5	CCMA 2.5	CCMD 2.5	CCMA 3.0	CCMD 3.0	CCMA 4.0	CCMD 4.0
0.5 mm ²	AWG 20	with no grooves																																																																							
0.75 mm ²	AWG 18	one groove (back side)																																																																							
1 mm ²	AWG 18	one groove																																																																							
1.5 mm ²	AWG 16	two grooves																																																																							
2.5 mm ²	AWG 14	three grooves																																																																							
3 mm ²	AWG 12	one wide groove																																																																							
4 mm ²	AWG 12	with no grooves																																																																							
0.5 mm ²	AWG 20	with no grooves																																																																							
0.75 mm ²	AWG 18	one groove (back side)																																																																							
1 mm ²	AWG 18	one groove																																																																							
1.5 mm ²	AWG 16	two grooves																																																																							
2.5 mm ²	AWG 14	three grooves																																																																							
3 mm ²	AWG 12	one wide groove																																																																							
4 mm ²	AWG 12	with no grooves																																																																							
CCFA 0.5	CCFD 0.5																																																																								
CCFA 0.7	CCFD 0.7																																																																								
CCFA 1.0	CCFD 1.0																																																																								
CCFA 1.5	CCFD 1.5																																																																								
CCFA 2.5	CCFD 2.5																																																																								
CCFA 3.0	CCFD 3.0																																																																								
CCFA 4.0	CCFD 4.0																																																																								
CCMA 0.5	CCMD 0.5																																																																								
CCMA 0.7	CCMD 0.7																																																																								
CCMA 1.0	CCMD 1.0																																																																								
CCMA 1.5	CCMD 1.5																																																																								
CCMA 2.5	CCMD 2.5																																																																								
CCMA 3.0	CCMD 3.0																																																																								
CCMA 4.0	CCMD 4.0																																																																								

dimensions in mm

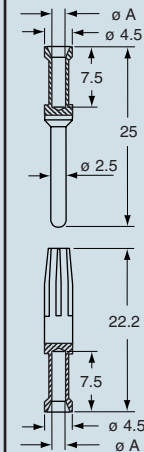


terminal side (front view)

side with reference arrow ▲



dimensions in mm



CCF and CCM contacts

conductor section mm ²	ø slot A (mm)
0.5	1.1
0.75	1.3
1.0	1.45
1.5	1.8
2.5	2.2
3	2.55
4	2.85

- stripping length see table at page 13

dimensions indicated are not binding and may be changed without notice

the modular inserts must be installed in suitable frames which in turn are installed in traditional housings or COB panel support

frames for modular units page: 137

- tools for crimp contacts see pages 248, 252, 254 and 256
- extraction tool for BUS shielded connectors from MIXO BUS insert see page 238

seat for shielded connectors, shielded connectors



10A crimp contacts silver and gold plated



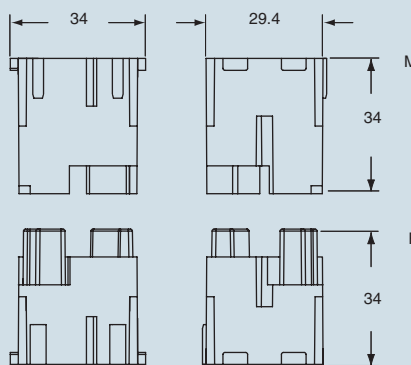
description	part No.	part No.	part No.
seats for two shielded connectors - female inserts, two seats for BUS connectors - male inserts, two seats for BUS connectors	CX 02 BF CX 02 BM		
shielded connectors - female inserts, four contacts seat + shield - male inserts, four contacts seat + shield	CX 04 BF CX 04 BM		
shielded connectors - female inserts, one contacts seat + shield - male inserts, one contacts seat + shield	CX 01 BF CX 01 BM		
10A female crimp contacts 0.14÷0.37 mm ² AWG 26÷22 0.5 mm ² AWG 20 0.75 mm ² AWG 18 1 mm ² AWG 18 1.5 mm ² AWG 16 2.5 mm ² AWG 14		CDFA 0.3 CDFA 0.5 CDFA 0.7 CDFA 1.0 CDFA 1.5 CDFA 2.5	CDFD 0.3 CDFD 0.5 CDFD 0.7 CDFD 1.0 CDFD 1.5 CDFD 2.5
10A male crimp contacts 0.14÷0.37 mm ² AWG 26÷22 0.5 mm ² AWG 20 0.75 mm ² AWG 18 1 mm ² AWG 18 1.5 mm ² AWG 16 2.5 mm ² AWG 14		CDMA 0.3 CDMA 0.5 CDMA 0.7 CDMA 1.0 CDMA 1.5 CDMA 2.5	CDMD 0.3 CDMD 0.5 CDMD 0.7 CDMD 1.0 CDMD 1.5 CDMD 2.5

silver plated

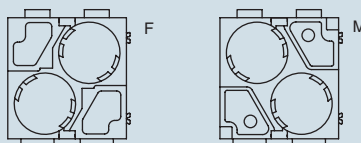
gold plated

Note:
The shielded connectors have their shield insulated from the enclosure's earthing point.
If you wish to earth-connect the shield, install on the panel an anchor for CR..ST (see page 239) shielded cables.

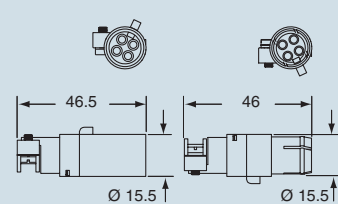
dimensions in mm
CX 02 BF, CX 02 BM



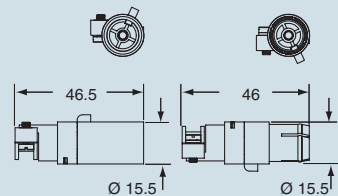
terminal side (front view)
side with reference arrow ▲



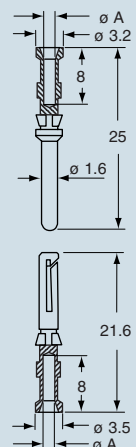
dimensions in mm
CX 04 BF, CX 04 BM



CX 01 BF, CX 01 BM



dimensions of crimp contacts in mm



CDF and CDM contacts

conductor section mm ²	ø slot A (mm)
0.14÷0.37	0.9
0.5	1.1
0.75	1.3
1.0	1.45
1.5	1.8
2.5	2.2

- stripping length see table at page 13

dimensions indicated are not binding and may be changed without notice

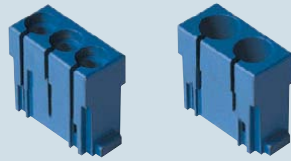
the modular inserts must be installed in suitable frames which in turn are installed in traditional housings or COB panel support

frames for modular units..... page: 137

Warnings:

- 1) Please note that the VDE-Directives do not allow the combination of electrical and liquid connections within the same connector for clear safety reasons.
- 2) CRM/F CX code pins and guides (page 243) must be used for pneumatic contacts modules. These pins also provide coding if pneumatic contacts modules are used exclusively.

modular units with 2 or 3 seats



pneumatic contacts with or without closing valve

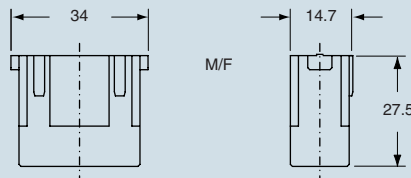


description	part No.	part No.
without contacts (to be ordered separately) - inserts with 3 housings for tube Ø 1.6 ÷ 4.0 - inserts with 2 housings for tube Ø 6.0	CX 03 P CX 02 P	
female contacts without closing valve - for tubes with internal ø 1.6 mm - for tubes with internal ø 3 mm - for tubes with internal ø 4 mm - for tubes with internal ø 6 mm male contacts without closing valve - for tubes with internal ø 1.6 mm - for tubes with internal ø 3 mm - for tubes with internal ø 4 mm - for tubes with internal ø 6 mm		CX 1.6 PF CX 3.0 PF CX 4.0 PF CX 6.0 PF CX 1.6 PM CX 3.0 PM CX 4.0 PM CX 6.0 PM
female contacts with closing valve - for tubes with internal ø 1.6 mm - for tubes with internal ø 3 mm - for tubes with internal ø 4 mm - for tubes with internal ø 6 mm male contacts (use contacts without closing valve)		CX 1.6 VC CX 3.0 VC CX 4.0 VC CX 6.0 VC

Use of units for pneumatic contacts

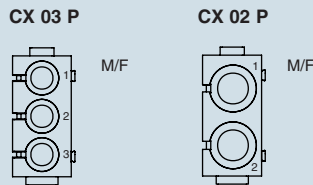
- identical male and female modular units
- pneumatic contacts for pressure values up to 8 bar, for use with clean and dry compressed air
- contacts for gas and liquids on request (see warning)
- use of tubes with Ø 1.6 - 3 - 4 and 6 mm, and possible replacement of tubes with assembled units
- possibility of using tubes with different diameters in the same modular unit
- female contacts with or without closing valve
- working temperature range - 40 °C ÷ + 80 °C

dimensions in mm

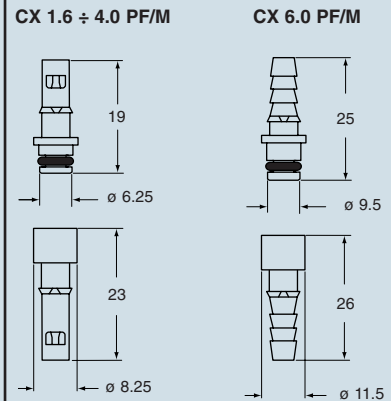


terminal side (front view)

side with reference arrow ▲



dimensions in mm



dimensions indicated are not binding and may be changed without notice

the modular units inserts must be installed in suitable frames which in turn are installed in traditional housings or COB panel support.
Alternatively, individual modules with a width of 14.7, can be installed in plastic supports.

frames for modular units page: 137

dummy module



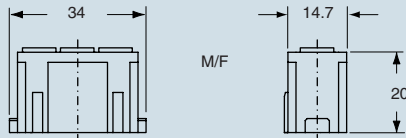
description

part No.

dummy module for unused frame seats

CX FM

dimensions in mm



position of units (coupling side view)

side with reference arrow ▲



dimensions indicated are not binding and may be changed without notice

MIXO

- die-cast zinc alloy frames
- with VDE ground contacts
- possibility of mounting female and male modular units on the same frame
- frames supplied with lock-in tab to attach units
- polarisation on frames
- code pins CR..CX see page 242

Warning

the module support frames are marked:

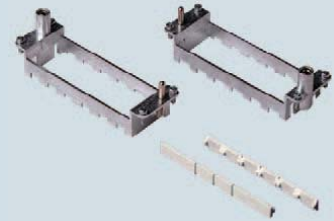
- with upper-case letters **A-B, A-C, A-D** and **A-F** (for use in hoods)
- with lower-case letters **a-b, a-c, a-d** and **a-f** (for use in housings)

Positioning the modules in the frames according to the respective letters is ensuring the specular assembly of modules, for which the hood will be coupled correctly to the housing.

frames for modular units



frames for modular units with lock-in tabs

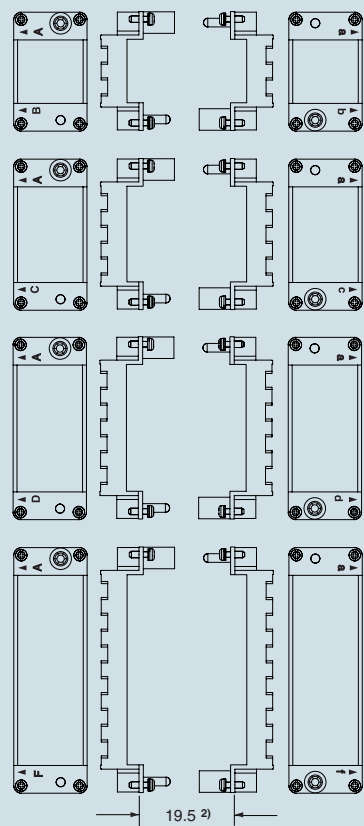


description	part No.
for CZ enclosures, size 49.16	CX 01 T
frames for modular units (module lock-in tabs included)	
- for 2 modular units	
- for 3 modular units	
- for 4 modular units	
- for 6 modular units	
lock-in tabs for modular units (6 units) dividable	

part No.	part No.
type for hoods	type for housings
CX 02 TM	CX 02 TF
CX 03 TM	CX 03 TF
CX 04 TM	CX 04 TF
CX 06 TM	CX 06 TF
	CX CFM

polarisation of frames with relative identification letters and couplings

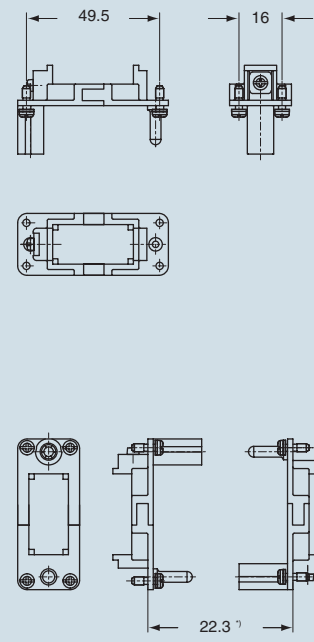
frame for hoods ¹⁾ frames for housings ¹⁾



¹⁾ the frames can be used either in hoods or housings, for a correct coupling please use both frame types (one with upper-case letters and the other with lower-case letters)
²⁾ distance for electric and fibre optic contacts: max 21 mm
 distance for pneumatic contacts: max 20.5 mm

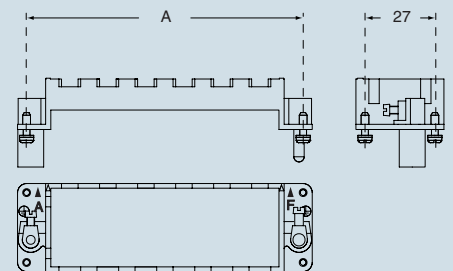
dimensions indicated are not binding and may be changed without notice

dimensions in mm



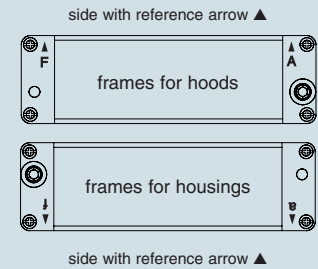
^{*)} distance for electric contacts: max 24 mm
 distance for pneumatic contacts: max 23.5 mm

dimensions in mm



part No.	A (mm) for housings size	
CX 02 TM / TF	44	44.27
CX 03 TM / TF	57	57.27
CX 04 TM / TF	77.5	77.27
CX 06 TM / TF	104	104.27

position of modules (contact side view)



When two or more identical connectors of the MIXO series are used, coded pins are used prevent incorrect coupling. (See pages 242 and 243).

CX CFM

